



*Improving patients'
lives since 1983*



Bio Compression Systems
120 West Commercial Avenue
Moonachie, NJ 07074, USA

Who We Are



Bio Compression has been the leading manufacturer of pneumatic compression devices for almost 40 years.

All of our pumps are lightweight and user friendly with a non-peristaltic action that mimics the body's own natural function. This action helps to increase circulation and reduce edema to manage your symptoms and improve your quality of life.

Compression therapy is used for the treatment of lymphedema, lipedema, venous insufficiency, wound healing, DVT prophylaxis, and many other circulatory disorders.

Based in Moonachie, New Jersey – our manufacturing facility is focused on quality products, boasting the largest selection of garments and the longest guarantee in the industry.

With countless clinical studies to prove the efficacy of our products, it's no wonder that patients from all over the world use Bio Compression devices to help treat their lymphatic and circulatory disorders. We are proud to help you.



Contents

PRODUCT CATEGORY

PAGE

Sequential Circulators	4-5
Garment Quality	6-7
4 Chamber Leg Sleeves	8-9
8 Chamber Leg Sleeves	10-11
4 Chamber Arm Sleeves	12-13
8 Chamber Arm Sleeves	14-15
Advanced Therapy Vests	16-17
Bio Pants and Abdominal Sleeves	18-19
Custom Sleeves	20-21

Sequential

On the forefront of pneumatic compression are our 2000 series pumps. Designed to be user friendly, a digital screen allows for easy operation. The pause button allows you to stop treatment and start again without skipping a beat; focus therapy allows for extra attention to a specific area; and the compliance meter keeps track of your hours of use. These gradient sequential pneumatic compression devices are used for the treatment of lymphedema, venous insufficiency, and various other circulatory disorders. Improve your quality of life starting today with the 2000 series pumps.

Benefits Include:

- Manage pain
- Increase lymphatic and vascular flow
- Promote wound healing
- Reduce swelling
- Prevent infection
- Improve quality of life

Indications

- Lymphedema
- Lipedema
- Phlebolympheema
- DVT prophylaxis
- Chronic venous insufficiency
- Wound care



SC-2004-DL



SC-2008-DL

Key Features:

- 4-Chamber compression therapy
- Unilateral or bilateral capability
- Adjustable pressure between 10 and 120 mmHg
- Adjustable cycle time between 60 and 120 seconds
- Timer with a countdown or continuous mode
- Focus therapy
- Pause button
- Compliance meter
- 3 year warranty

Specifications:

Dimensions: 11 cm x 30 cm x 18 cm
Weight: 1,5 kgs

Key Features:

- 8-Chamber compression therapy
- Unilateral or bilateral capability
- Adjustable pressure between 10 and 120 mmHg
- Adjustable cycle time between 60 and 120 seconds
- Timer with a countdown or continuous mode
- Focus therapy
- Pause button
- Compliance meter
- 3 year warranty

Specifications:

Dimensions: 11 cm x 30 cm x 18 cm
Weight: 1,7 kg



See product manual for warnings, precautions, and contraindications.

Circulators

SC-4008-DL

Designed with you in mind, the 4008 pump has cutting edge technology with a digital touch screen. The user can program the pressure in any, or all, of the 8 chambers - always maintaining higher pressure distally to prevent backflow. Featuring a pause button that allows you to take a break and come back to where you left off; focus therapy for patients with a special area that needs attention; and a compliance meter to keep track of your hours of use. The ultimate gradient pneumatic compression device for the treatment of lymphedema, venous insufficiency, and various other circulatory disorders. The 4000 series pumps are as unique as the population they serve.

Key Features:

- 8 chamber system
- Unilateral or bilateral capability
- Touch Screen LCD
- Adjustable pressure between 10 and 120 mmHg in all chambers
- Adjustable cycle time between 60 and 120 seconds
- Timer with a countdown or continuous mode
- Pre-Therapy mode
- Focus therapy
- Pause button
- Compliance meter
- 3 year warranty

Specifications:
Dimensions: 11 cm x 30 cm x 18 cm
Weight: 1,7 kg



See product manual for warnings, precautions, and contraindications.

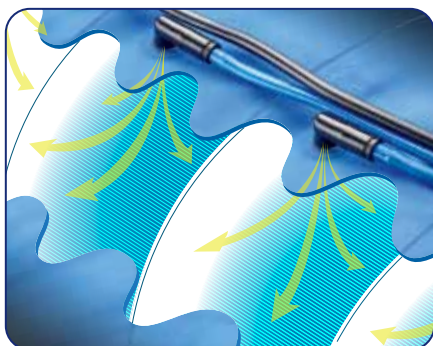
Made to the



Bio Compression Systems produces the most extensive range of garments in the industry. With over 50 different standard sizes available off the shelf for lower extremity, upper extremity, abdominal and truncal patients, nobody is left untreated by Bio Compression. And for those rare occasions where our standard sleeves do not fit, our manufacturing facility produces custom garments once a week to assure everyone is properly fitted without having to wait.

All of our garments are made of high quality 200 Denier Nylon Oxford, coated with 3 mil of polyurethane to assure a level of water resistance that allows all of our sleeves to be cleaned. Engineered with our special baffle system to guarantee there is no gapping during treatment, our sleeves are latex free and do not require expanders, separate tubing, or any other accessories. A simple connection system allows you to plug the sleeves into our pump with ease and be operational within seconds.

All of our lower extremity sleeves come complete with pull-up straps for ease of use, and our entire range of sleeves includes protective loops to stop unnecessary pulling of the tubes. Biocomfort Garments are manufactured with zippers from YKK, the best of its kind. We spare no cost in assuring that you get the greatest sleeve possible. Our goal is 100% satisfaction for every patient we treat.



Baffle System

While many other companies promote an overlapping chamber system with their sleeves, our garments have been carefully engineered with a baffle system that assures the best flow of pressure from one chamber to the next. The construction of independently controlled pressure chambers assures there is never gapping, peaks and valleys or bleed-through with the delivered pressure.

highest Standards



Quick Connect System

Our Biocomfort Garments all come ready to use. Just line up the chamber numbers on our specially developed clips with the numbers on our pumps, squeeze the clip and insert. It's that easy to get your treatment sessions started.



YKK® Zippers

We spare no cost in assuring that your garment is the best possible product. All of our zippers come from YKK®, one of the leaders in the industry. Complete with automatic locking sliders, our sleeves will not unzip accidentally when inflated.



Welded Air Connection Ports

All of our sleeves come complete with connection ports that are RF Welded into the sleeves. This construction guarantees that there will be no leaking, no breaking, and a perfect flow of air each and every time you sit down for a treatment.



Integrated Pull-Up Straps

All of our lower extremity garments come complete with built-in pull-up straps. While our garments are already the easiest to don and doff, we have taken every step possible to assure your patients are compliant every step of the way.

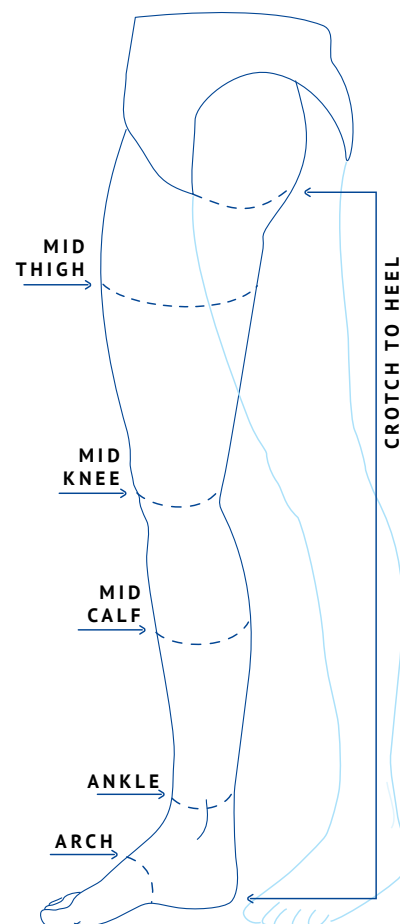
4 Chamber

STANDARD LEG SLEEVE



4 Chamber Standard Leg Sleeve Size and Part Number

Measurements below are in Centimeters and are the maximum allotted point on limb										
Part Number	Size		Circumferences						Lengths	
			Thigh below Crotch	Mid Thigh	Mid Knee	Mid Calf	Ankle	Arch (Instep)	Crotch to Heel (Length)	Inguinal Crease
GN-3045-S	Small	Narrow	65	64	56	51	46	50	65	69
GN-3045-M	Medium	Narrow	70	65	58	51	46	50	71	81
GN-3045-L	Large	Narrow	71	66	61	53	46	50	81	91
GS-3045-H	Half	Standard	N/A	N/A	74	69	60	56	48	N/A
GS-3045-S	Small	Standard	79	76	71	62	55	50	65	69
GS-3045-M	Medium	Standard	81	76	71	62	55	50	71	81
GS-3045-L	Large	Standard	84	81	76	66	55	50	81	91
GW-3045-H	Half	Wide	N/A	N/A	78	71	74	58	48	N/A
GW-3045-S	Small	Wide	90	86	78	71	65	55	65	69
GW-3045-M	Medium	Wide	93	86	76	71	65	57	71	81
GW-3045-L	Large	Wide	94	91	81	74	61	52	81	91
GXW-3045	Medium	Extra Wide	112	104	91	86	76	57	74	81



4 Chamber

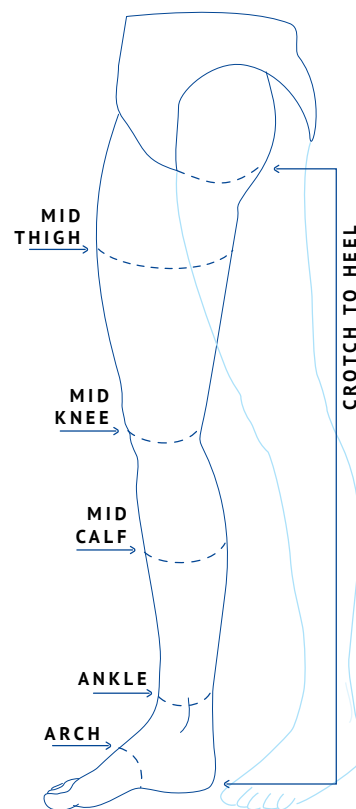
ADJUSTABLE LEG SLEEVE



LOWER EXTREMITY GARMENTS

4 Chamber Adjustable Leg Sleeve Size and Part Number

Measurements below are in Centimeters and are the maximum allotted point on limb										
Part Number	Size		Circumferences						Lengths	
			Thigh below Crotch	Mid Thigh	Mid Knee	Mid Calf	Ankle	Arch (Instep)	Crotch to Heel (Length)	Inguinal Crease
GA-3045-H	Half	Adjustable	N/A	N/A	81	76	60	56	48	N/A
GA-3045-S	Small	Adjustable	86	84	78	70	55	50	65	69
GA-3045-M	Medium	Adjustable	89	86	79	70	55	50	71	81
GA-3045-L	Large	Adjustable	94	91	84	74	55	50	81	91
GWA-3045-H	Half	Adj. Wide	N/A	N/A	85	79	74	58	48	N/A
GWA-3045-S	Small	Adj. Wide	98	94	85	79	65	55	65	69
GWA-3045-M	Medium	Adj. Wide	100	93	85	79	65	57	71	81
GWA-3045-L	Large	Adj. Wide	102	97	89	81	61	57	81	91
GXWA-3045	Medium	Adj. Extra Wide	119	112	99	94	76	57	74	81



8 Chamber

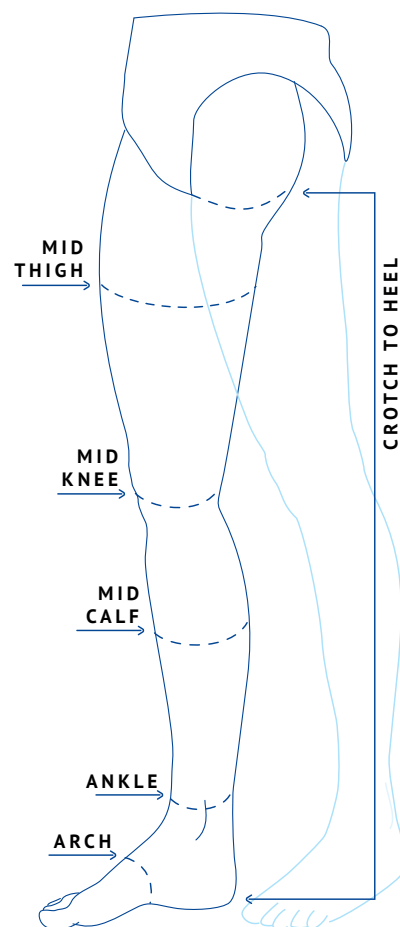
STANDARD LEG SLEEVE



8 Chamber Standard Leg Sleeve Size and Part Number

Measurements below are in **Centimeters** and are the maximum allotted point on limb

Part Number	Size		Circumferences						Lengths	
			Thigh below Crotch	Mid Thigh	Mid Knee	Mid Calf	Ankle	Arch (Instep)	Crotch to Heel (Length)	Inguinal Crease
G8-3045-S	Small	Standard	79	76	71	62	55	49	65	69
G8-3045-M	Medium	Standard	81	76	71	62	55	49	71	81
G8-3045-L	Large	Standard	84	81	76	66	55	49	81	91
GN8-3045-S	Small	Narrow	65	63	56	51	46	49	65	69
GN8-3045-M	Medium	Narrow	70	65	58	51	46	49	71	81
GN8-3045-L	Large	Narrow	71	66	61	53	46	49	81	91
GW8-3045-S	Small	Wide	90	86	77	71	65	55	65	69
GW8-3045-M	Medium	Wide	93	86	76	71	65	57	71	81
GW8-3045-L	Large	Wide	94	91	81	74	65	57	81	91
GXW8-3045	Medium	Extra Wide	112	104	91	86	76	57	74	81



8 Chamber

ADJUSTABLE LEG SLEEVE

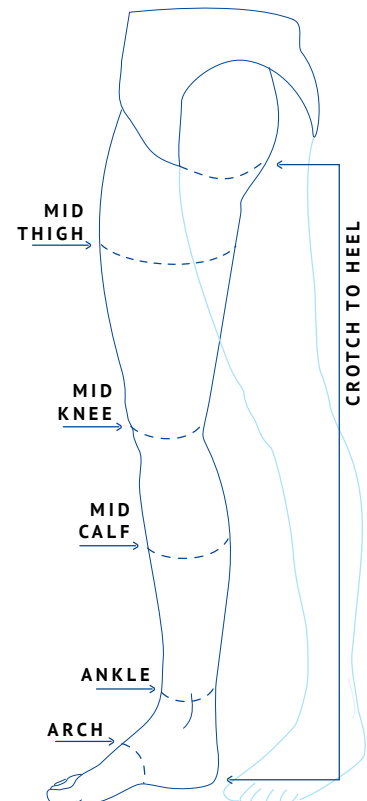


LOWER EXTREMITY GARMENTS

8 Chamber Adjustable Leg Sleeve Size and Part Number

Measurements below are in **Centimeters** and are the maximum allotted point on limb

Part Number	Size		Circumferences					Lengths		
			Thigh below Crotch	Mid Thigh	Mid Knee	Mid Calf	Ankle	Arch (Instep)	Crotch to Heel (Length)	Inguinal Crease
A8-3045-S	Small	Adjustable	86	84	79	70	55	49	65	69
A8-3045-M	Medium	Adjustable	89	86	79	70	55	49	71	81
A8-3045-L	Large	Adjustable	94	91	84	74	55	49	81	91
GWA8-3045-S	Small	Adj. Wide	98	94	85	79	65	55	65	69
GWA8-3045-M	Medium	Adj. Wide	100	93	85	79	65	57	71	81
GWA8-3045-L	Large	Adj. Wide	102	96	89	81	61	57	81	91
GXWA8-3045	Medium	Adj. Extra Wide	119	112	99	94	76	57	74	81



4 Chamber

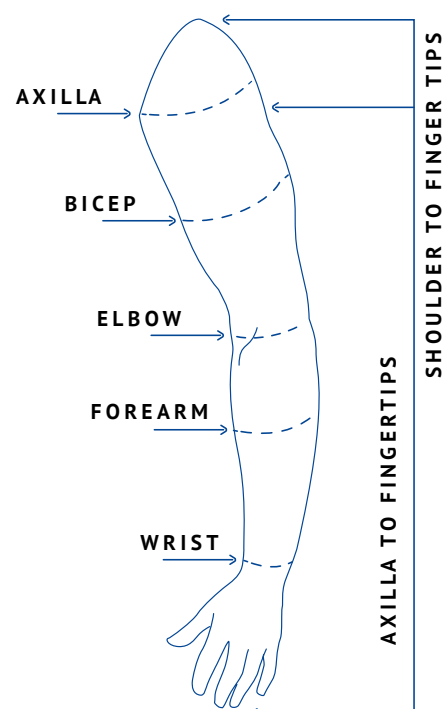
ARM SLEEVE



4 Chamber Arm Sleeve Size and Part Number

Measurements below are in **Centimeters** and are the maximum allotted point on limb

Part Number	Size	Circumferences					Lengths	
		Axilla	Bicep	Elbow	Forearm	Wrist	Axilla to Fingertips	Shoulder to Fingertips
GS-3035-S	Small	60	56	49	44	38	61	67
GS-3035-M	Medium	69	66	61	53	46	71	79
GS-3035-L	Large	65	61	55	48	41	79	90



4 Chamber

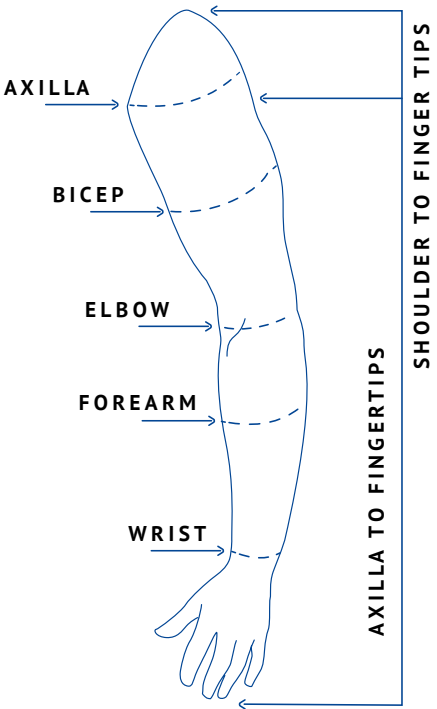
ARM & SHOULDER SLEEVE



UPPER EXTREMITY GARMENTS

4 Chamber Arm & Shoulder Sleeve Size and Part Number

Measurements below are in Centimeters and are the maximum allotted point on limb									
Circumferences								Lengths	
Part Number	Size	Side	Axilla	Bicep	Elbow	Forearm	Wrist	Axilla to Fingertips	Shoulder to Fingertips
GS-3035-SH-S-L	Small	Left	60	56	49	44	38	61	67 +20
GS-3035-SH-S-R	Small	Right	60	56	49	44	38	61	67 +20
GS-3035-SH-M-L	Medium	Left	69	66	61	53	46	71	79 +20
GS-3035-SH-M-R	Medium	Right	69	66	61	53	46	71	79 +20
GS-3035-SH-L-L	Large	Left	65	61	55	48	41	79	90 +20
GS-3035-SH-L-R	Large	Right	65	61	55	48	41	79	90 +20



8 Chamber

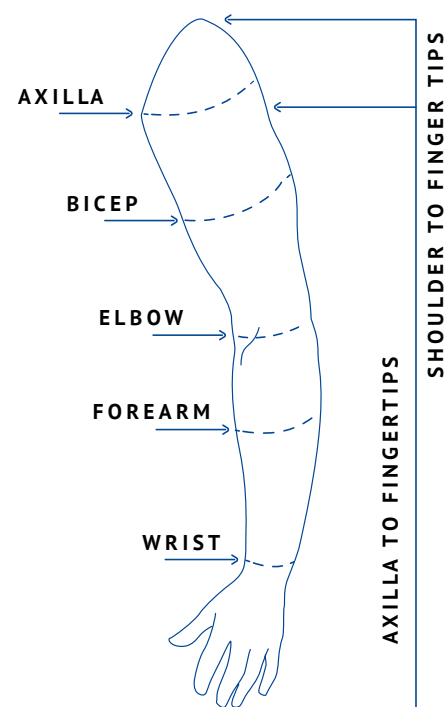
ARM SLEEVE



8 Chamber Arm Sleeve Size and Part Number

Measurements below are in **Centimeters** and are the maximum allotted point on limb

Part Number	Size	Circumferences					Lengths	
		Axilla	Bicep	Elbow	Forearm	Wrist	Axilla to Fingertips	Shoulder to Fingertips
G8-3035-S	Small	60	56	49	44	38	61	67
G8-3035-M	Medium	69	66	61	53	46	71	79
G8-3035-L	Large	65	61	55	48	41	79	90



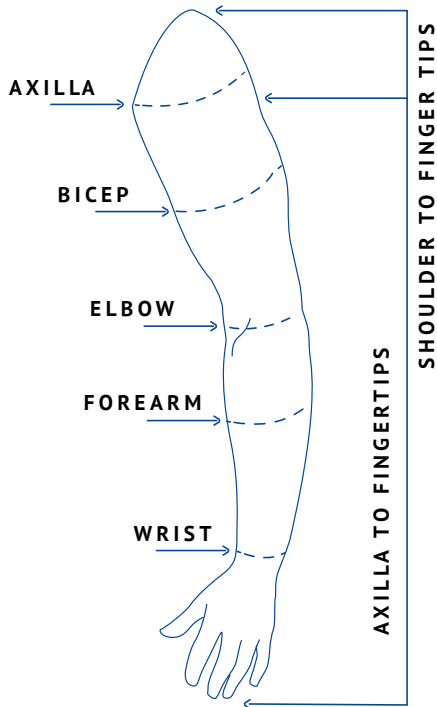
8 Chamber

ARM & SHOULDER SLEEVE



UPPER EXTREMITY GARMENTS

8 Chamber Arm & Shoulder Sleeve Size and Part Number									
Measurements below are in Centimeters and are the maximum allotted point on limb									
Circumferences								Lengths	
Part Number	Size	Side	Axilla	Bicep	Elbow	Forearm	Wrist	Axilla to Fingertips	Shoulder to Fingertips
G8-3035-SH-S-L	Small	Left	60	56	49	44	38	61	67+20
G8-3035-SH-S-R	Small	Right	60	56	49	44	38	61	67+20
G8-3035-SH-M-L	Medium	Left	69	66	61	53	46	71	79+20
G8-3035-SH-M-R	Medium	Right	69	66	61	53	46	71	79+20
G8-3035-SH-L-L	Large	Left	65	61	55	48	41	79	90+20
G8-3035-SH-L-R	Large	Right	65	61	55	48	41	79	90+20



4 Chamber

For those patients who have truncal swelling that does not involve inflammation of the arms, our 4 Chamber Bio Vest is the ideal garment for treatment. Fully adjustable with 6 hook and loop straps, pressure begins around the shoulder and neck area and slowly moves down the front side of the torso for effective lymphatic drainage in areas formerly difficult to treat.



Part Number: GV-3000

16 Chamber

ELITE-16-CHAMBER BILATERAL BIO VEST



Continuing the quest to meet the needs of all patients with arm and chest lymphedema, our 16 chamber bilateral arm and vest garment is an all-in-one garment that provides compression to both arms and chest. A simple hook and loop adjustment in the back during the initial fitting and a zippered front for donning thereafter provides ease of use. The unique design of this garment insures a proper fit that lends to no migration while in use. When used with the Bio Compression SC-4008-DL Device, compression in any chamber of the garment can be adjusted for comfort and effectiveness.



Part Number: GV-3010-S-2/M-2/L-2

8 Chamber

ELITE-8-CHAMBER BIO VEST



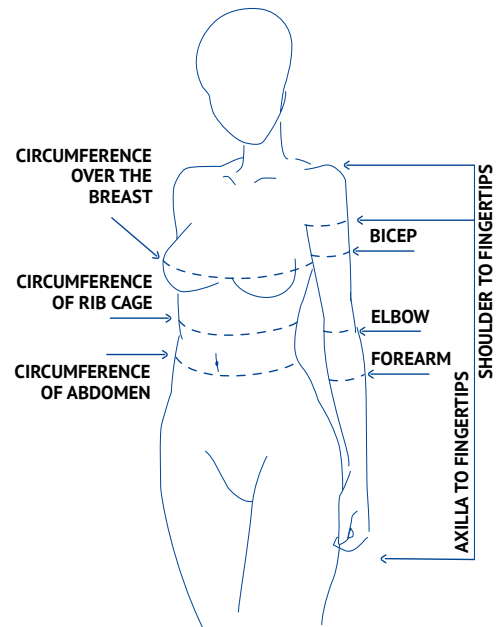
This 8 chambered sleeve provides tissue fluid movement from the arm all the way to the thoracic duct. With a chamber located directly at the axillary area, scar tissue and axillary nodes are effectively addressed. Chest edema is not a problem with the Elite-8 Vest. If the thoracic duct is blocked and/or not draining adequately, fluids will be redirected in a downward motion thereby creating new channels. This process, called lymphangiogenesis, is the magic performed by this garment and the ultimate goal for compression from the arm all the way to the thoracic duct. Donning the garment is simple and the initial adjustable fitting insures a proper fit every time with no migration while in use.

Indications for Use:

- Lymph Node Dissection
- Lymph Node Obstructions
- Surgical Damage to the Lymph Vessels and/or nodes
- Radiation Therapy
- Trauma

Key Features:

- Axilla Compression
- Chest Compression
- Triple Action Fluid Movement:
 - Axilla
 - Thoracic Duct
 - Directional Flow
- Adjustable fit with no migration
- Easy Donning and Doffing



Upper Extremity/8 Chamber Garment Sizing Chart

Measurements below are in **Centimeters** and are the maximum allotted point on limb

Circumferences								Lengths		
Part Number	Size	Side	Axilla	Bicep	Elbow	Forearm	Wrist	Axilla to Fingertips	Shoulder to Fingertips	Thorax (Adjustable)
GV-3010-S-L	Small	Left	63	60	53	51	48	65	75	71 to 140
GV-3010-S-R	Small	Right	63	60	53	51	48	65	75	71 to 140
GV-3010-M-L	Medium	Left	63	60	53	51	48	71	81	71 to 140
GV-3010-M-R	Medium	Right	63	60	53	51	48	71	81	71 to 140
GV-3010-L-L	Large	Left	63	60	53	51	48	79	89	71 to 140
GV-3010-L-R	Large	Right	63	60	53	51	48	79	89	71 to 140

16 Chamber

BIO PANTS



This 16 chamber all-in-one pant offers a unique design covering the entire lower body. The garment addresses not only lower extremities but the difficult to treat areas of the groin, buttocks and abdomen. This garment is designed to direct fluid movement from the foot all the way to the inguinal nodes and thoracic duct for drainage while also creating new channels. Sizing is not a problem with our pants as each patient is custom-fitted to ensure that an ideal treatment is delivered each and every time. With two front zippers and easy to use pull-up straps, this garment is simple to don and doff for every patient. The Bio Pants provide the best possible solution for the most difficult conditions.

Benefits:

- Reduces Pain
- Improves Lymphatic and Vascular Flow
- Promotes Wound Healing
- Prevents Infection
- DVT Prophylaxis
- Reduce Edema

Indications:

- Lymph Node Dissection
- Lymph Node Obstructions
- Surgical Damage to the Lymph Vessels and/or Nodes
- Radiation Therapy
- Trauma

Bio Pants Standard Sizing Chart

Measurements below are in **Centimeters** and are the maximum allotted point on limb

Circumferences										Lengths			
Part Number	Size	Upper Abdomen	Lower Abdomen	Groin	Mid thigh	Knee	Mid Calf	Ankle	Foot/Instep	Abdomen (GT)	Full Leg (AG)	Lower Leg (AD)	Foot
GBA-3045-S-2	Small	112	112	76	74	71	63	53	51	38	74	46	30
GBA-3045-M-2	Medium	112	112	79	76	74	66	56	51	41	81	51	30
GBA-3045-L-2	Large	122	122	89	86	81	74	61	51	46	89	56	30

Key Features:

- Full Lower Body Coverage
- Bilateral Legs
- Groin
- Buttocks
- Abdomen
- Custom Fit
- Comfortable Foot Design
- Easy to Don and Doff
- Directional Tissue Fluid Movement

8 Chamber

BIO ABDOMINAL



For the unilateral patient that has genital or abdominal swelling, our Bio Abdominal sleeve is the perfect solution for treatment. This 8 chamber garment helps overcome compromised lymphatic passages by moving fluid toward regional nodes for subsequent excretion. Compression is delivered from the foot to the inguinal crease through 7 chambers in the leg, and then massages the abdomen through a specially developed larger chamber that wraps around the waist. This garment is side-specific and is offered in three different standard sizes as well as custom-fit.

Benefits:

- Reduces Pain
- Improves Lymphatic and Vascular Flow
- Promotes Wound Healing
- Prevents Infection
- DVT Prophylaxis
- Reduce Edema

Key Features:

- Lower Body Coverage
 - Unilateral Legs
 - Buttocks
 - Abdomen
- Comfortable Foot Design
- Easy to Don and Off
- Directional Tissue Fluid Movement

Indications:

- Lymph Node Dissection
- Lymph Node Obstructions
- Surgical Damage to the Lymph Vessels and/or Nodes
- Radiation Therapy
- Trauma

Bio Abdominal Sizing Chart

			Centimeters	
Part Number	Size	Side	Trunk Size Circumference	Full Leg Length
GBA-3045-S-L	Small	Left	66 to 147	66
GBA-3045-S-R	Small	Right	66 to 147	66
GBA-3045-M-L	Medium	Left	66 to 147	81
GBA-3045-M-R	Medium	Right	66 to 147	81
GBA-3045-L-L	Large	Left	66 to 147	91
GBA-3045-L-R	Large	Right	66 to 147	91

Custom Sleeves

Despite having the greatest selection of garments in the Pneumatic Compression Device industry, there will always be a patient who requires something special. Knowing that our goal is to treat 100% of the patients requiring our products, Bio Compression Systems manufactures custom garments once a week all year long. By filling out our custom order forms with the unique characteristics of your patient, we are able to treat patients with extreme swelling, very tall dimensions, and amputees. No other manufacturer can accomplish what we do, and we get it done in under 10 days.



Measuring and drawing out the pattern based on your patients' unique measurements



Sizing the material to the pattern



Transferring the pattern to the material



Cutting the material to size



Installing the baffles and connection ports



Custom fitting the RF sealing welds.



Hand sewing the zippers and binding

Made to Order

C
U
S
T
O
M

G
A
R
M
E
N
T
S



Custom arm sleeve



Custom leg sleeve



Custom amputee sleeve



Because every patient deserves the best possible treatment.

H&R Healthcare Ltd.
3 Redcliff Road
Melton
Hull HU14 3RS
United Kingdom
Phone: +44 (0)1482 631606
Email: customerservices@hrhealthcare.co.uk
www.hrhealthcare.co.uk

Bio Compression Systems
120 West Commercial Avenue
Moonachie, NJ 07074, USA
Phone: +1-201-939-0716
Toll-Free Phone (US): 800-888-0908
Email: biosystems@biocompression.com
www.biocompression.com