

# kliniderm<sup>®</sup> debride

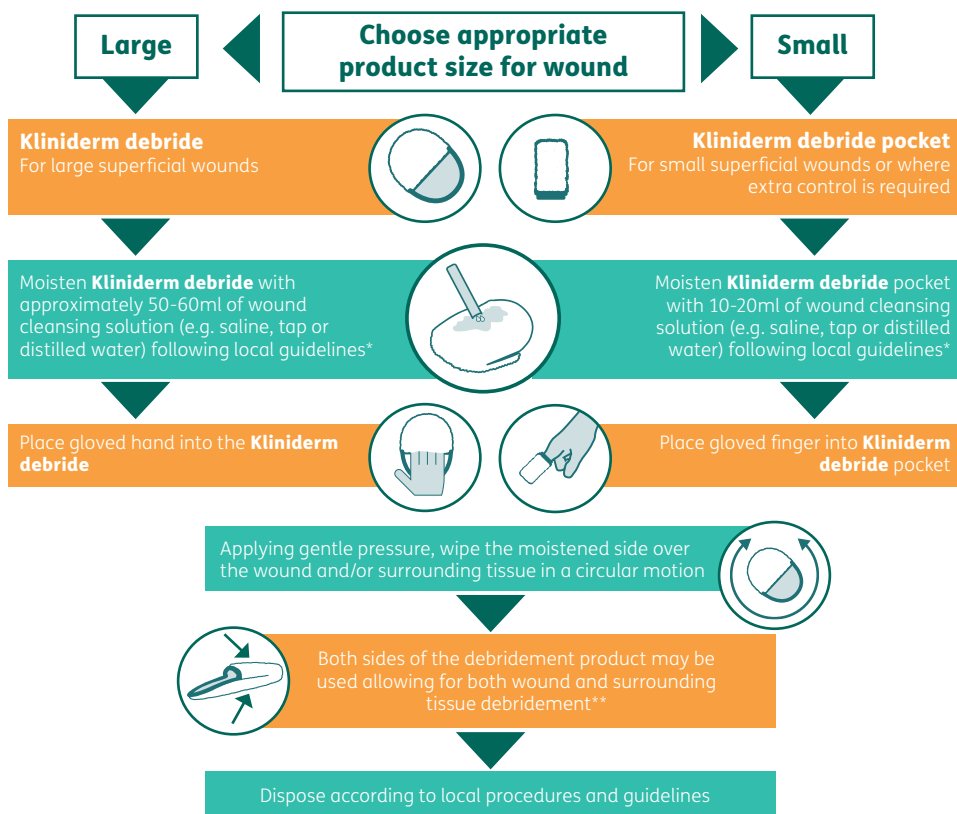
## User guide

**Kliniderm debride** is a double sided monofilament pad designed to provide rapid, gentle, effective mechanical debridement to clean the wound bed and surrounding tissue.

### Kliniderm debride provides rapid effective debridement by gently removing:

- Biofilm
- Debris
- Slough
- Devitalised tissue
- Hyperkeratosis
- Bacteria

### How to use



\*Follow your local guidelines on cleansing solutions used. For postoperative wounds use sterile solution to moisten the pad as per local guidance.

\*\*Always use a new debridement pad for each individual wound to reduce the risk of cross contamination.

# What type of wounds can Kliniderm debride be used for?

Acute & chronic superficial wounds

Diabetic foot ulcers

Arterial ulcers (*under the guidance of a specialist*)

Venous leg ulcers

Pressure ulcers

Postoperative wounds\*

Lacerations & abrasions

Burns & scalds

Lymphoedema

Dry, flaky, scaly tissue

Hyperkeratosis

Small sinuses



## Do's and Don'ts

To ensure optimum results for **Kliniderm debride** follow the guidelines below:

### DO

- ✓ Holistically assess and diagnose prior to commencing treatment and seek specialist advice if required
- ✓ Moisten **Kliniderm debride** with a wound cleansing solution prior to use e.g. saline or distilled water as per instructions
- ✓ Apply gentle pressure and wipe the moistened side over the wound and/or surrounding skin in a circular motion
- ✓ Use both sides of the pad to manage the wound bed and surrounding tissue
- ✓ Use a new pad with every separate wound to reduce cross contamination
- ✓ Use to remove hyperkeratosis
- ✓ Use to remove bacteria and biofilm
- ✓ Use if a wound has suspected biofilm and is not progressing as part of wound bed preparation
- ✓ Use to remove slough, devitalised tissue and debris
- ✓ Use **Kliniderm debride** for large wounds
- ✓ Use **Kliniderm debride pocket** for smaller wounds or where greater control is required
- ✓ Always follow local guidelines on wound cleansing

### DO NOT

- ✗ Apply too much pressure or rub too quickly as this could cause patient discomfort
- ✗ Use on a patient with a known sensitivity to one or more of the components of this product (polyester and polypropylene)
- ✗ Use as a wound dressing
- ✗ Do not cut
- ✗ Re-use a used piece

**Kliniderm debride**  
is 100% LATEX FREE

Visit our  
website for  
available  
resources  
and further  
information:

